

Choose the Right SEM for Your Lab

Click Each
Product
for Video



Tabletop



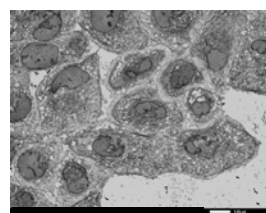
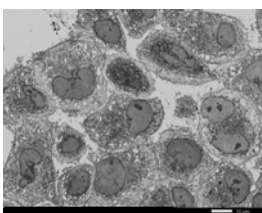
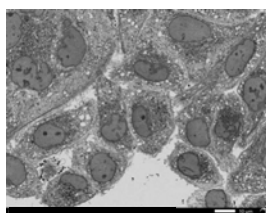
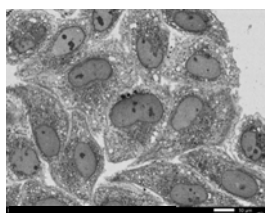
Tungsten



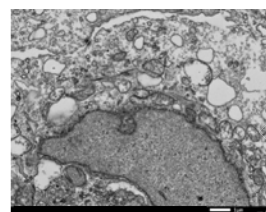
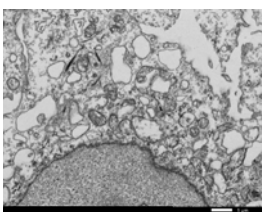
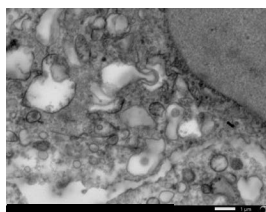
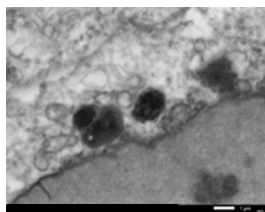
**Multipurpose
Field Emission**



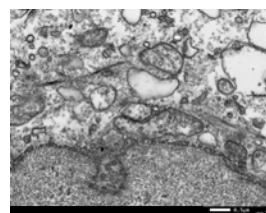
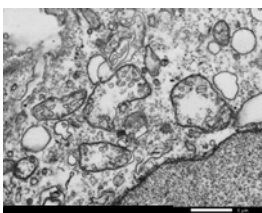
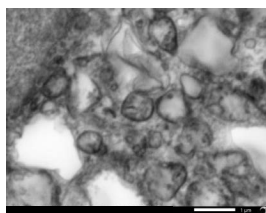
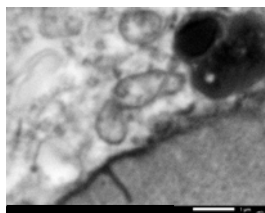
UHR Field Emission



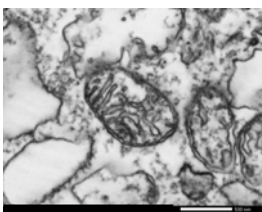
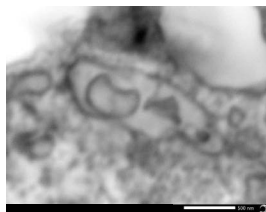
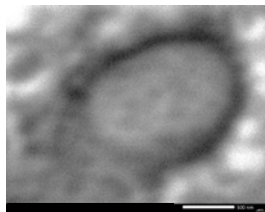
100um



10um



1um



100nm



10nm

Price

JEOL Intelligent SEM technology offers the best solutions for your imaging and analysis needs. Our suite of electron microscopes feature the most advanced electron optics in the industry. Combining our unique technology with advances in automation algorithms provides exceptional ease of use, automation, and streamlined workflow.

Highlights Include:

- Advanced AI for quick change of any SEM parameters
- Intuitive software interface
- Guaranteed instrument uptime
- Seamless navigation from optical to SEM image
- Automated montage collection
- Embedded chemical composition analysis



Scan QR code
for videos